



Support Ecran, TV Mount
Pour tous les modèles Focus
For all Focus models

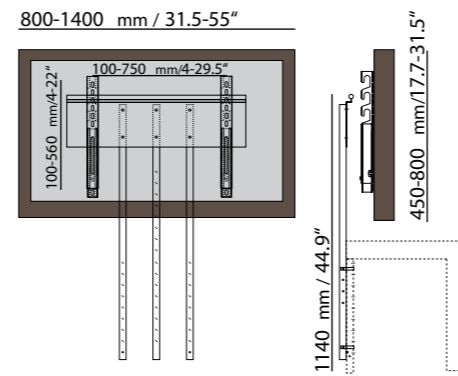


Système tournant
Swivel System

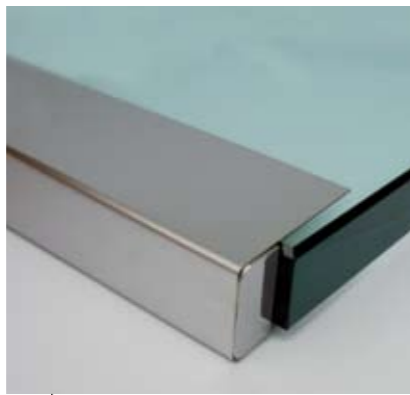


Plateau tournant
Rotary Plate

Support Ecran TV Mount



Guide câbles Spyder
Cable Spyder



Kit lumière
Lighting Kit

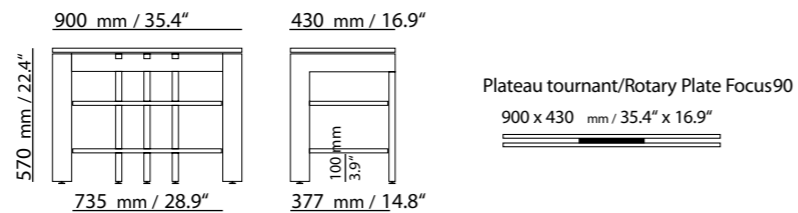


Roulettes
Casters



Focus 90/110/150

Focus 90

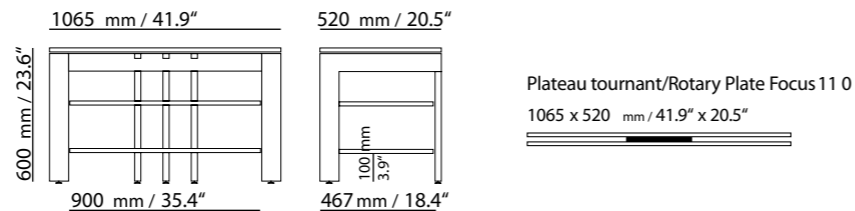


Système tournant /Swivel System Focus90
Verre de 20 mm/0.8" Glass/

Système 3: 900 x 430 mm / 35.4" x 16.9"

Base/Base 900 x 430 mm / 35.4" x 16.9"

Focus 110



Système tournant/Swivel System Focus 110
Verre de 20 mm/0.8" Glass/

Système 4: 1065 x 520 mm

System 4: 41.9" x 20.5"

Système 6: 708 x 520 mm

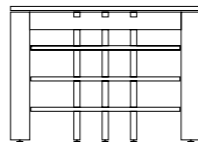
System 6: 27.9" x 20.5"

Focus 90 Plus/110 Plus

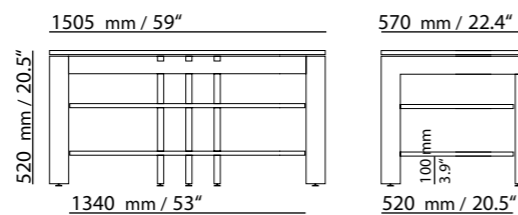
Version Plus:

Une étagère supplémentaire

Plus version: expanded by
an additional shelf



Focus 150



Focus 150 disponible
uniquement en 20 mm transparent

Focus 150 only available with
20 mm/0.8" clear glass

Détails

- Epaisseur du verre: 10 transparent/mat Verre de 20mm transparent
- Version inox : 20mm uniquement
- Possibilité d'ajouter un niveau (version Plus)
- Capacité de charge: 70 kg par étagère
- Capacité du plateau supérieur: 150 kg
- Étagère sup. montée sur plots anti-vibrations
- Étagères à hauteur réglable de ± 50 mm
- Pieds circulaires à hauteur réglable
- Solution de guide câbles intégré, 3 x

Accessoires

- Kit lumière
- Système rotatif pour version Maxi- 20 mm
- Plateau tournant pour version 10mm
- Solutions de passage des câbles variées
- Roulettes (5 pièces)
- Support écran en inox, acier noir ou gris argent poudré

Details

- Glass thickness: 0.8" (clear glass only) or 0.4" (clear or frosted glass)
- Stainless steel only 20 mm/0.8" clear glass
- Additional level available (Plus versions)
- Load capacity per level: 70 kg/154 lbs.
- Load capacity top panel: 150 kg/330 lbs.
- Top panel provided with vibration dampers
- All shelves height-adjustable (± 50 mm/ ± 2 ")
- Height-adjustable leveling feet
- Integrated cable management (3 x)

Accessories

- Lighting system
- Swivel system for Maxi versions - 20 mm/0.8"
- Rotary plate for 10 mm/0.4" versions
- Various cable management solutions
- Casters (5 pieces)
- TV mount in stainless steel, steel black or silvergrey-powdercoated

Design: P. Schroers

design déposé / industrial design registered
Caractéristiques techniques et photos non contractuelles.

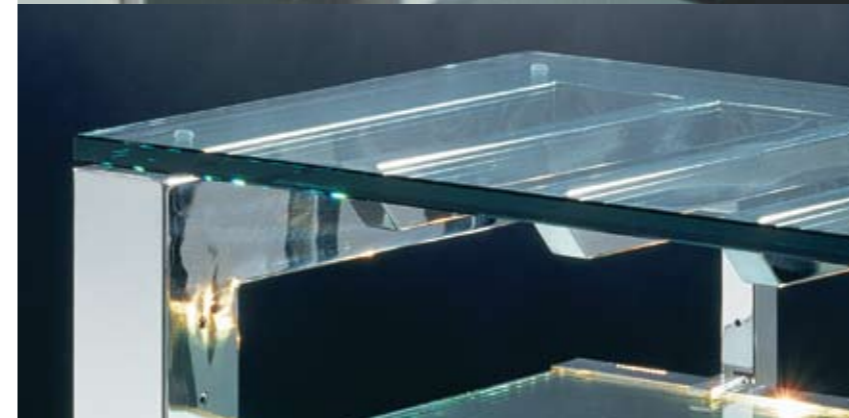
Technical design of the stated products is subject to change without notice.



Glasplatten-Aufhängung
Suspension system

Die Fachböden sind um jeweils ± 50 mm höhenverstellbar – so kann die Kapazität des Möbels optimal an die Geräteabmessungen angepasst werden.

All shelves height-adjustable ± 50 (± 2 ") in order to adapt the capacity of the furniture to the equipment dimensions.



Topplatte
Top Panel

Topplatte ist auf schwingungsabsorbierenden, rutschhemmenden Pads gelagert.

The top panel is provided with vibration dampers.



Finitions acier
Steel surfaces

Disponible en trois finitions d'acier
acier inoxydable, acier noir ou gris argent poudré.

Available in three steel surfaces: Stainless steel (polished), steel black- or silvergrey-powdercoated

Focus 110, schwarz pulverbeschichtet

Focus 110, black powdercoated

Passage des câbles
Cable Management

